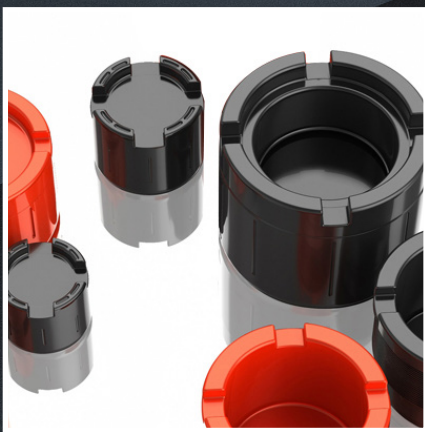


SPECIALTY PLASTICS

Protective Plastic Products

PRODUCT BROCHURE & STOCKLIST

Thread protectors, flange covers, pipe caps & hose protection products.



Hose Pro (Spiral Wrap)

Hose Pro is manufactured using only the highest quality of HDPE available to give outstanding technical properties with exceptional crush and outstanding abrasion resistance. These combined ensure you get the maximum service life from your hoses.

Our spiral shaped guard is self-lubricating for ease of installation, has rounded edges with domed profile and can be installed on the hose either before or after it has been fitted to the machinery.



FRAS Product Approvals

Flame Retardancy: The product and processes used in construction of Hose Pro FRAS products comply with and have been approved by U.S. Mine Safety and Health Administration (MSHA) under Standard ASTP 5007.

Acceptance Marking: MSHA IC-349/01

Approval Date: 24 April 2019

Issuer: U.S. Mine Safety and Health Admin.

Hose Pro FRAS products have also been tested in accordance with ISO 8030 Rubber & plastics hoses – Method of Test for Flammability.

Product: HP-16/20 FR

Test Report Number: T20-00081/0001

Test Report Date: 12 February 2020

Issuer: NSW Mine Safety Technology Centre

Anti-Static: The electrical resistance of Hose Pro FRAS products has been tested in accordance with ISO 8031 8031 Rubber & plastics hoses & assemblies – Determination of electrical resistance & conductivity.

Product: HP-16/20 FRAS

Test Report Number: T19-00177/0001b

Test Report Date: 9 May 2019

Issuer: NSW Mine Safety Technology Centre

PART #	Colours	Nom ID [mm]	OD Fitting Range
HP-09	Black, Red, Yellow, Blue	6	7 mm - 10mm
HP-12	Black, Red, Yellow, Blue	9	9 mm - 12 mm
HP-16	Black, Red, Yellow, Blue, Green, Orange	12	12 mm - 16 mm
HP-20	Black, Red, Yellow, Blue, Green, Orange	15	16 mm - 22 mm
HP-25	Black, Red, Yellow, Blue, Green, Orange	19	22 mm - 28 mm
HP-32	Black, Red, Yellow, Blue, Green, Orange	23	27 mm - 33 mm
HP-40	Black, Red, Yellow, Blue, Green, Orange	30	32 mm - 42 mm
HP-50	Black, Red, Yellow, Blue	38	42 mm - 55 mm
HP-63	Black, Red, Yellow, Blue	47	52 mm - 65 mm
HP-75	Black, Red, Yellow, Blue	61	65 mm - 80 mm
HP-90	Black, Red, Yellow, Blue	70	80 mm - 150 mm
HP-110	Black, Red, Yellow, Blue	86	150 mm +

Fitting Guidelines

1. Measure OD of product to be wrapped [eg OD = 120mm]
2. Select appropriate Hose Pro product using 'OD FITTING RANGE' in table to right as guide [in our example HP-90 which has range 80-150mm will be required to wrap the 120mm OD product]
3. Divide OD by 'ID' to get wrap ratio [R] [for our example R is $120 / 70 = 1.7$]
4. Multiply length of product to be wrapped by R to get length of Hose Pro required [to wrap 40m of 120mm OD hose will require $1.7 \times 40m$ or 68m of HP-90]

In a hurry... no prob. Just give us a call and we will work it out for you.

UV Stability and Temperature

- HosePro, made from HDPE, has very high UV stability
- Performs strongly in within range of -50 to 100°C

Colours

- Standard colour is black.
- Red, Yellow and Blue available in all sizes
- Limited range of green and orange
- Other colours by request

Lengths

- All sizes up to HP-63 supplied in 20m cartons
- HP-75 and HP-90 available in 10 or 20m cartons
- HP-110 supplied in 10m cartons only

Part Number Interpretation

Part # HP-25/20 + SUFFIX

HP = Hose Pro

-25 = nominal hose OD for which this product is made to fit
(e.g. HP-25 suits hoses with nom. OD around 25mm)

/20 = carton length in meters (20)

FRAS = Flame Retardant Anti Static

FR = Flame Retardant (only)

YEL = Yellow (or other eg RED)

Spiral Guard "Lite"

Our spiral shaped guard is self-lubricating for ease of installation, has rounded edges with domed profile and can be installed on the hose either before or after it has been fitted to the machinery.



UV Stability and Temperature

- **Spiral Guard "Lite"** is made from HDPE, has very
- high UV stability Performs strongly in within range of -50 to 100°C

Colours

- Standard colour is black.

Lengths

- All sizes up to supplied in 20m cartons

PART #	Nom ID [mm]	OD Fitting Range
SGX-12	9	9 mm - 12 mm
SGX-16	12	12 mm - 16 mm
SGX-20	15	16 mm - 22 mm
SGX-25	19	22 mm - 28 mm
SGX-32	23	27 mm - 33 mm
SGX-40	30	32 mm - 42 mm
SGX-50	38	42 mm - 55 mm
SGX-63	47	52 mm - 65 mm
SGX-75	61	65 mm - 80 mm
SGX-90	70	80 mm - 150 mm
SGX-110	86	150 mm +

Silicone Fire Sleeve

Made from a woven fibreglass core coated with an extra thick, special formulation of silicone rubber, Fire Sleeves provides crucial protection against high temperatures and potential fire hazards. Our fire sleeve insulate and safeguard hydraulic hoses from heat and flames, ensuring operational integrity and enhancing safety in demanding industrial environments. Made to **MSHA IC-293/06**



PART #	Nom Ø [mm]	Dash Size	Length [m]	Weight [~kg]
SP FS-10	10	- 6	20	2.5
SP FS-15	15	- 10	20	3.5
SP FS-20	20	- 12	20	5.5
SP FS-25	25	- 16	20	6.5
SP FS-32	32	- 20	20	8.5
SP FS-40	40	- 26	20	10.5
SP FS-50	50	- 32	15	13
SP FS-65	65	- 40	15	15
SP FS-75	75	- 48	15	19
SP FS-90	90	- 56	15	23
SP FS-100	100	- 64	15	28

Tape

- Finish the job with our 5m rolls of silicone self-fusing tape.
- Call us for price and availability.

Standards / Approvals

- Min 0.8mm cover of silicone
- Min temp range of -54°C -> 260°C
- Fluid resistance (to hydraulic oils & other fluids)
- Asbestos free
- Product markings

Working Temperature

- Continuous at 260°C
- 1090°C for 15 to 20 minutes
- 15 to 30 seconds exposure to 1650°C

Fitting Guidelines

Industry experience generally dictates appropriate size for different situations however the following clearance guide can be used as a starting point;

For lengths of

- 5 - 10m add 10% to ID
- 10 - 20m add 15% to ID
- For +20m lengths, add 20% to ID

Cut Rolls

- All pricing is on a full roll basis. Cut rolls available on request.

Technical Data	Units	Measure
Color		RED
Weave of sleeve		Twill
Sleeve wall thickness	mm	≥ 2
Sleeve inner diametre	mm	10 up to 100
Silicone coating thickness	mm	Min 1.0mm
Silicone dielectric strength	kv/mm	≥ 18
Silicone hardness	Shore A	35 ± 5
Silicone tensile strength	Mpa	≥ 4
Silicone tearing strength	Kn/m	≥ 17
Temperature resistance	°C	Silicone 260°C

Burst Shield

A high-performance Diffusion Abrasion Sleeve (DAS) made using the very best in nylon fibre technology. Designed to be class leading, Burst Shield has exceptional burst suppression and pin hole diffusion properties. Burst Shield also offers excellent abrasion resistance.

FRAS compliance for MDG-3608 is achieved with strong passes for Flame Retardancy and Anti-Static testing. Burst Shield is available in a wide range of sizes to suit every job.



PART #	Colours	Nom Ø [mm]	Width [mm]
DAS-18	Black	18	32
DAS-23	Black, Red	23	40
DAS-26	Black, Yellow	26	48
DAS-29	Black, Red	29	50
DAS-32	Black	32	55
DAS-36	Black, Red, Yellow	36	62
DAS-40	Black	40	67
DAS-45	Black	45	75
DAS-56	Black, Red, Yellow	56	92
DAS-63	Black	63	103
DAS-71	Black, Red	71	116
DAS-93	Black, Red	93	152
DAS-110	Black	110	182
DAS-127	Black	127	207
DAS-180	Black	180	292

Standards / Approvals

Burst and Pin Hole Resistance

- Factory tested to suppress bursts and diffuse pin-hole leaks at 400 bar (5800 psi)

Abrasion

- Passes requirements when tested in accordance with ISO 6805

Flame Retardancy [FR]:

- MSHA Acceptance No. IC-349/03
- Pass as per ISO 6805 under ISO 8030.

Anti-Static [AS]:

- Pass as per ISO 6805 under ISO 8031
- Temperature Range
- DAS Sleeve has a safe working temp range of -400C to 1000C
- UV & Ozone stable

Custom Branding

- Available on request.

Fitting Guidelines

Background: Primarily Burst Shield is a burst suppression and pin-hole diffusion device and should be fitted in a manner to achieve this objective.

Size selection: The difference between the ID of the sleeve to be used and OD of the subject hose is referred to as the 'fitting ratio'. The higher the fitting ratio, the more effective the sleeve will be in suppressing a hose burst. Fitting ratio should be 1.5 : 1. Tighter ratios are used in lower pressure situations or where abrasion resistance only is required.

Length: As a guide, sleeve should be cut to hose length plus 10%. The extra length is designed to prevent sleeve from pulling on the retaining method during operations.

Retaining: There are numerous methods of retaining sleeve in place. Following points will assist in determining best practice;

- If the sleeve is to be used in a FRAS environment, the sleeve should be 'grounded' to the body of the machine. This allows any static buildup to be discharged through the steel fitting. Grounding is achieved with positive contact between the conductive filaments in the sleeve and the metal fitting
- If crimp rings are used to retain sleeve, use caution to ensure underlying fitting is not over-crimped
- Industry feedback indicates heavy duty heat shrink is the preferred method of holding sleeve in place

Lengths & Cut Rolls

- All sizes supplied in 50m lengths
- Occasional rolls may have a joint which will be marked with tape
- All joint rolls are supplied at 55m with min 15m length

Colours

- Standard colour is black.
- Red and Yellow available in certain sizes (refer table)
- Other colours by MOQ

Hook & Loop Rip Sleeve

Rip Sleeve is a high-performance sleeve with sewn in hook and loop.

Constructed using the same materials as our class leading Burst Shield, the Inspection and Abrasion Sleeve (IAS) provides a quick and effective bundling and protection solution whilst still allowing easy access for inspection at any point along the wrapped product.



PART #	Nom Ø [mm]	Width [mm]
IAS-045	45	185
IAS-060	60	230
IAS-080	80	300
IAS-100	100	355
IAS-170	170	575
Print	"RIP SLEEVE IAS-045"	

Key Attributes

- Full Length heavy duty sewn in hook & loop (velcro)
- Extra Wide hook & loop, 38mm, provides greater 'hold' and more flexibility on fitting diameter
- Double Stitching on leading edge of hook and loop greatly reduces stitch failure
- Fast and Easy Installation
- Post Assembly Installation makes ideal for retrofit on existing equipment
- The very latest in Nylon weaving technology
- Heavyweight, tough and highly flexible
- Low rub co-efficiency resists wear
- 200,000 cycles without degradation
- Minimum temperature -40°C
- Maximum temperature +120°C
- High UV resistance

Lengths & Cut Rolls

Lengths

- All sizes supplied in 10m lengths
- (25m lengths will be available from July 2024)
- No joint rolls

Temperature Range

- DAS Sleeve has a safe working temp range of -400C to 1200C

UV Stability

- Burst Shield is very UV stable

Colours

- Black only

Custom Branding

- Currently not available but if you have a high volume scenario, please contact us.



SPECIALTY PLASTICS

Protective Plastic Products

Australis Plastics PTY LTD - Trading as Specialty Plastics
ABN 49 120 132 667 - ACN 120 132 667

14 Moriarty Road, Welshpool
Western Australia 6106

sales@specialtyplastics.com.au

Phone: +61 8 9353 5588

Tool Joint Thread Protectors

API
SP 2 3/8 API IF HD Pin
SP 2 3/8 API IF HD Box
SP 2 3/8 API REG HD Pin
SP 2 3/8 API REG HD Box
SP 2 7/8 API IF HD Pin
SP 2 7/8 API IF HD Box
SP 2 7/8 API REG HD Pin
SP 2 7/8 API REG HD Box
SP 3 1/2 API IF HD Pin
SP 3 1/2 API IF HD Box
SP 3 1/2 API REG HD Pin
SP 3 1/2 API REG HD Box
SP 4 API IF HD Pin
SP 4 API IF HD Box
SP 4 API REG HD Pin
SP 4 API REG HD Box
SP 4 1/2 API IF HD Pin
SP 4 1/2 API IF HD Box

API Continued
SP 4 1/2 API REG Pin
SP 4 1/2 API REG HD Box
SP 5 1/2 API IF HD Pin
SP 5 1/2 API IF HD Box
SP 5 1/2 API REG HD Pin
SP 5 1/2 API REG HD Box
SP 5 1/2 API FULL HOLE Pin
SP 5 1/2 API FULL HOLE
SP 6 5/8 API IF HD Pin
SP 6 5/8 API IF HD Box
SP 6 5/8 API REG HD Pin
SP 6 5/8 API REG HD Box
SP 6 5/8 API FULL HOLE Pin
SP 6 5/8 API FULL HOLE Box
SP 7 5/8 API IF HD CE Pin
SP 7 5/8 API IF HD CE Box
SP 7 5/8 API REG HD Pin
SP 7 5/8 API REG HD Box

Beco
SP BECO 3 Pin
SP BECO 3 Box
SP BECO 3 1/2 Pin
SP BECO 3 1/2 Box
SP BECO 4 Pin
SP BECO 4 Box
SP BECO 4 1/2 Pin
SP BECO 4 1/2 Box
SP BECO 5 1/4 Pin
SP BECO 5 1/4 Box
SP BECO 6 Pin
SP BECO 6 Box
SP BECO 8 Pin
SP BECO 8 Box

Other Tool Joint Thread Protectors

Remet
SP REMET 3 1/2 Pin
SP REMET 3 1/2 Box
SP REMET 4 Pin
SP REMET 4 Box
SP REMET 4 1/2 Pin
SP REMET 4 1/2 Box

EUE
SP 4 1/2 EUE Pin
SP 4 1/2 EUE Box

Metzke
SP METZKE 3 1/2 Pin
SP METZKE 3 1/2 Box
SP METZKE 4 Pin
SP METZKE 4 Box
SP METZKE 4 1/2 Pin
SP METZKE 4 1/2 Box

DIBH
SP DIBH 3 1/8 Pin
SP DIBH 3 1/8 Box

XT Threads
SP XT 39 Pin
SP XT 39 Box
SP XT 57 Pin
SP XT 57 Box

GPDS Threads
SP GPDS 50 Pin
SP GPDS 50 Box
SP GPDS 55 Pin
SP GPDS 55 Box

RRE & FTD
SP RRE 4 1/2 Pin
SP RRE 4 1/2 Box
SP FTD 4 1/2 Pin
SP FTD 4 1/2 Box

HT
SP 2 7/8 HT PAC Pin
SP 2 7/8 HT PAC Box
SP HT-55 184 Pin
SP HT-55 184 Box

