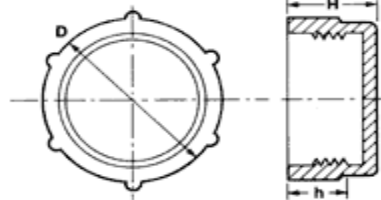


SPECIALTY PLASTICS

PLUGS, CAPS, CLOSURES FOR THE ENGINEERING AND ALLIED TRADES

Unit 1, 14 Moriarty Road, Welshpool WA 6106
 Telephone: (08) 9353 5504 Fax: (08) 9353 5599
 email: sales@specialtyplastics.com.au

THREADED PROTECTION CAPS METRIC



These caps are used throughout the automotive, fluid power and engineering industries to protect threaded components from dust, moisture and damage during production, storage and shipment.

| Part Number | Thread Size | Dimensions (mm) | | | Standard Pack Size | Handy Pack Size | Mini Pack Size |
|-------------|-------------|-----------------|------|------|--------------------|-----------------|----------------|
| | | H | D | h | | | |
| 12100 | M 8 x 1 | 10.0 | 9.9 | 7.0 | 5000 | 1000 | 100 |
| 12101 | M 10 x 1 | 10.0 | 11.9 | 7.5 | 5000 | 1000 | 100 |
| 12103 | M 12 x 1.5 | 12.0 | 14.0 | 9.5 | 5000 | 1000 | 100 |
| 12104 | M 14 x 1.5 | 12.0 | 15.9 | 9.5 | 5000 | 1000 | 100 |
| 12105 | M 16 x 1.5 | 12.0 | 17.9 | 9.5 | 5000 | 1000 | 100 |
| 12106 | M 18 x 1.5 | 14.0 | 19.7 | 11.5 | 4000 | 800 | 80 |
| 12107 | M 20 x 1.5 | 14.0 | 21.9 | 9.5 | 4000 | 800 | 80 |
| 12108 | M 22 x 1.5 | 13.8 | 24.3 | 11.5 | 3000 | 600 | 60 |
| 12109 | M 24 x 1.5 | 14.0 | 26.2 | 11.5 | 3000 | 600 | 60 |
| 12110 | M 25 x 1.5 | 14.0 | 27.2 | 11.5 | 2000 | 500 | 50 |
| 12111 | M 26 x 1.5 | 14.0 | 28.3 | 11.5 | 2000 | 500 | 50 |
| 12122 | M 30 x 2 | 14.0 | 34.0 | 11.5 | 1500 | 400 | 50 |
| 12123 | M 36 x 2 | 16.0 | 38.8 | 13.5 | 1500 | 250 | 25 |
| 12124 | M 42 x 2 | 16.0 | 44.5 | 13.5 | 500 | 125 | 20 |
| 12126 | M 52 x 2 | 16.0 | 54.7 | 13.5 | 500 | 100 | 20 |

Other Sizes are Available

www.specialtyplastics.com.au